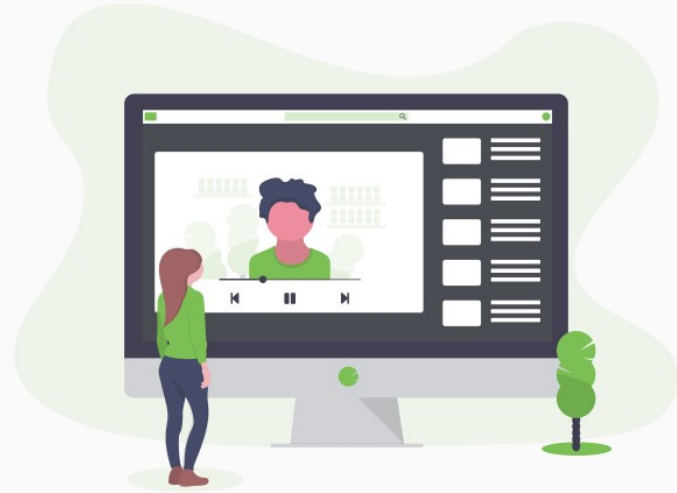


## New Data Manager

A course for Data managers who are new to the role of working in schools with no prior experience of educational data.

We will take you through education based terminologies and processes, building on this to develop your role to support the school and staff.



### COURSE DETAILS

The course aims to start with the basics to quickly develop your understanding of systems and access to DfE data to ensure you are equipped with the knowledge required for a data administration role in schools. Developing your skills and understanding to effectively manage the set up of your MIS. The trainer will demonstrate using GO 4 Schools.

Key aspects covered:

- Sources of data
- Key performance measures at KS4 used by the DFE (A8, P8, Ebacc)
- KS2 data used in secondary schools
- Subjects and Qualifications (QAN codes and grading schemes)
- Grade types used in schools (target and progress grades)
- Uploading targets
- School grading schemes
- Introduction to markbooks (MBs are covered in detail in another course)
- Reports
- Introduction to using explorers
- Introduction to student attributes

As part of the Data Manager training we offer each delegate a one to one call with the trainer if they would like to follow up on their school set-up in light of what has been covered in the training. This will typically be for 30 to 40 minutes on the same day or very shortly afterwards.

### DATES AND TIMES

11th - 13th May 2027

10.00—12.00 [3 x 2 hours online training sessions]

A certificate will be issued for the completion of this course by the [CPD Certification Service](#)

Do more with GO 4 Schools—Save time—Save money—Reduce logins

**COSTS AND BOOKING DETAILS**

£300 per delegate. All prices are subject to VAT.

Discounts will be applied when booking multiple courses or having multiple delegates on the same course.

Places are limited to a maximum of two delegates per school. Please complete the booking form to secure your place.

The course is also available to book exclusively for your school if you would like multiple staff to access the training. Contact us for details on pricing.

Email: [events@go4schools.com](mailto:events@go4schools.com) or Tel: **01223 967556**

**GO 4 SCHOOLS TRAINING EVENTS**

Our training events are developed with the ethos of 'Working together' — sharing knowledge and confidence in school data to ensure a 'best practice' approach and maximum value.

**Current training offers include:**

- End and start of academic year set up for Data managers
- Induction for new Data managers or those new to managing GO 4 Schools.
- Set up and use of markbooks
- Analysing data for Data manager, senior leadership and data teams
- Effective use of Behaviour and attendance modules
- Post-16 data analysis

See our website for more details: [Engage - CPD - GO 4 Schools](#)

**Maximise your training**

All courses will be delivered using Microsoft Teams, we recommend that you use the App to access the training as the online version has some reduced functionality that may hinder the visibility of some aspects of the training session.

All delegates will require at least a laptop with a microphone and camera, if possible we suggest access to two screens so you can follow the training and also access GO 4 Schools during the training.

Delegates will need to have **School manager** access in your GO 4 Schools system.



Facebook.com/triangulatedata - Data Managers | Senior Leaders groups